

# Tour of the Hilltowns 2022 Finish Line Area

The finish line is located on Rte 8A (Savoy Rd), about 1.5 miles northwest of Notchview Reservation.

Directions **TO** finish line **FROM** Notchview:

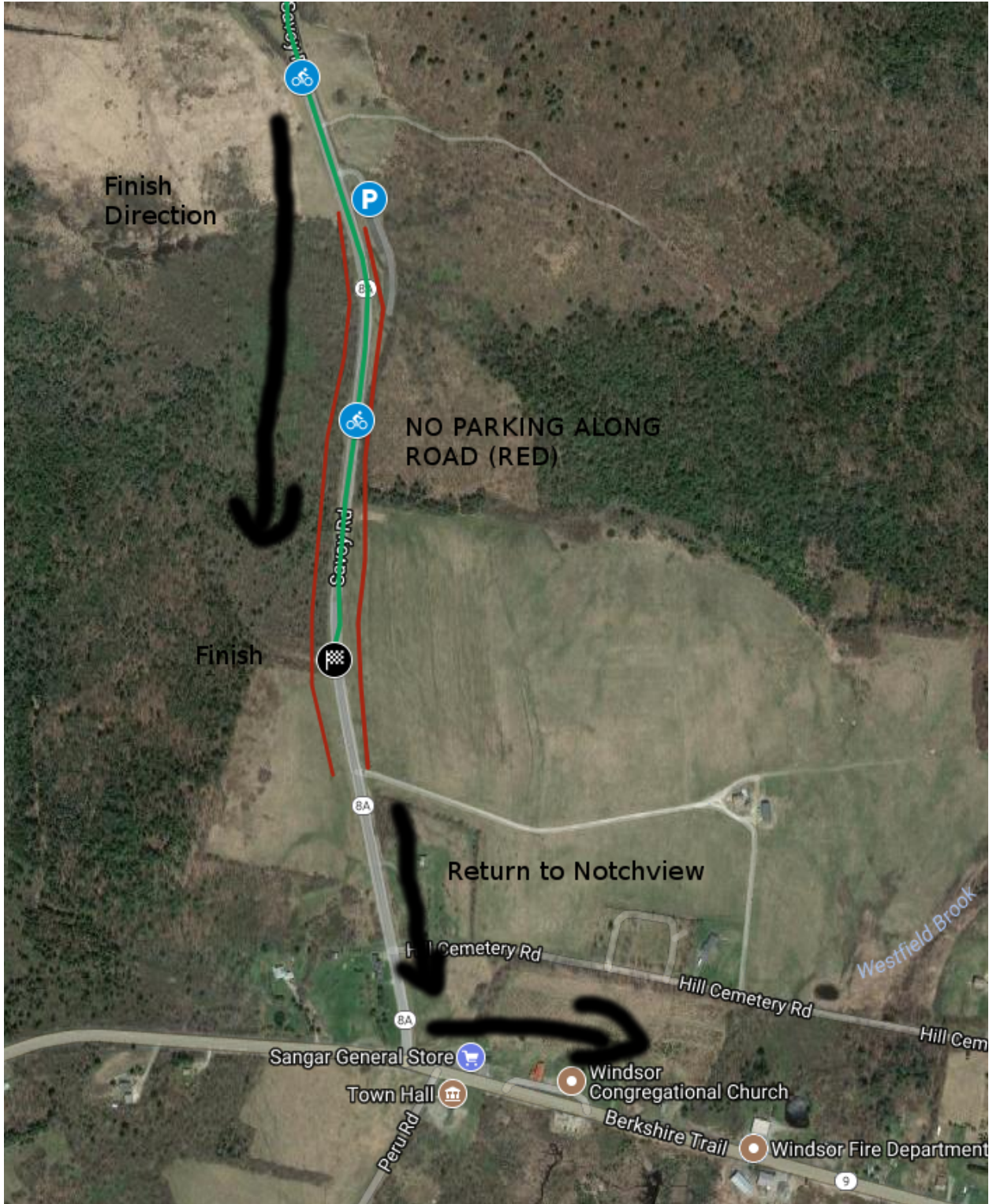
- Turn right out of Notchview's driveway onto Rte 9 west.
- Continue on Rte 9 west approximately one mile.
- Turn right onto Rte. 8A north (Savoy Rd).
- Continue straight about ½ mile.
- Finish line & tents on the left (west) side of Rte. 8A (southbound lane).
- Spectator & volunteer parking at Mass Wildlife parking lot on right (east) side of Rte 8A ¼ mile north of finish. **PLEASE, FOR RACER AND YOUR SAFETY, NO PARKING ON Rte 8A**

Directions **FROM** finish line **TO** Notchview:

- Continue past the finish line, south on Rte. 8A (Savoy Rd.), about ½ mile.
- At the stop sign, turn left onto Rte 9 east. **PLEASE USE CAUTION, RTE 9 is high speed traffic!**
- Continue about one mile on Rte. 9 east, gradual downhill
- Notchview Reservation is on the left. **PLEASE USE EXTREME CARE WHEN CROSSING RTE 9. THERE ARE 4 LANES OF TRAFFIC AT 55 MPH**

Please view (zoom & scroll) this interactive map [here](#)

Additional maps next pages:



Finish Direction

P

NO PARKING ALONG ROAD (RED)

Covey Rd

Finish

Return to Notchview

Hill Cemetery Rd

Westfield Brook

Hill Cemetery Rd

Hill Cem

Sangar General Store

Town Hall

Windsor Congregational Church

Windsor Fire Department

Berkshire Trail

Peru Rd

8A

8A

9





Porta-Potty  
located in Mass  
Wildlife Parking  
Lot 1/4 mile north

Dirt Pull-Off-  
Officials Tent/  
Finish Timing

Officials & Staff may  
Park on this side of  
road

Savoy Rd

Savoy Rd

Savoy Rd

BA

BA